

HOVIS Lite

응용모델 조립 매뉴얼

초음파센서, 도트LED를
이용하여 회피기동하는 어보이더



Dongbu Robot

호비스 라이트 응용모델 조립 매뉴얼

어보이더 부품리스트

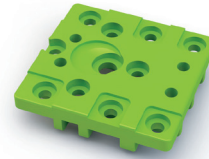
HOVIS Lite



ID
2



ID 0
ID 1
ID 4
ID 5



x1 DRS-0101
HerkuleX Servo
(Horn 체결)

x4 DRS-0101
HerkuleX Servo
(Horn 미체결)

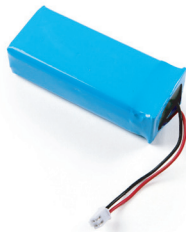
x4 DRB-0001
Front / Back

x10 DRB-0004
Universal Plate

x1 DRB-0009
U2-type Bracket



x1 DRB-0007
Battery Case & Holder



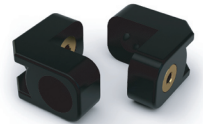
x1 DRL-0728
7.4V Li-Po Battery
(3,000mAh)



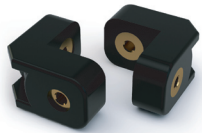
x1 DRC-005T
Controller



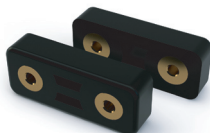
x4 DCW-0001
Wheel (White, Ø60)



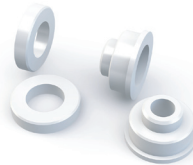
x29 DRJ-0001
L-type Joint
(Single Nut)



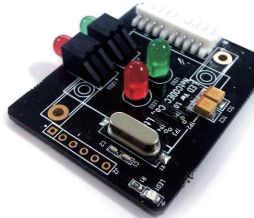
x9 DRJ-0002
L-type Joint
(Double Nut)



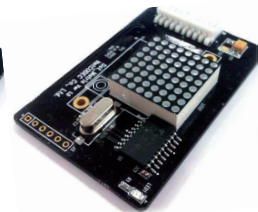
x14 DRJ-0006
L-type Joint
(12.5mm, Double Nut)



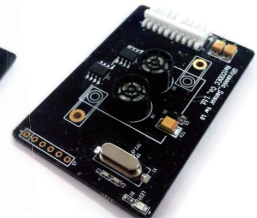
x1 DRJ-0011
Bushing Set



x1 LED모듈
(별매)



x1 도트매트릭스
LED모듈 (별매)



x1 초음파 센서
모듈 (별매)

1:1 SCALE

x2 DRA-0051
Nut (M2)

x54 DRA-0056
Bolt (PH/M 2.0x4)

x18 DRA-0058
Bolt (PH/M 2.0x6)

x19 DRA-0059
Bolt (PH/M 2.0x8)

x1 DRA-0062
Bolt (PH/M 3.0x8)

x3 DRA-0064
Bolt (PH/T 2.0x5)

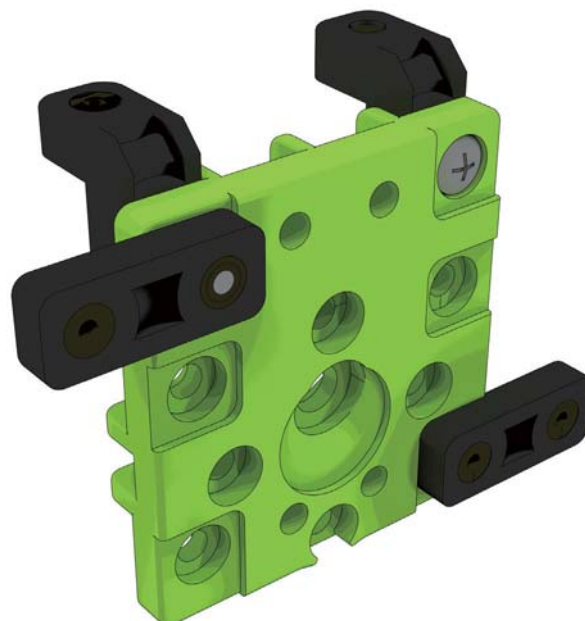
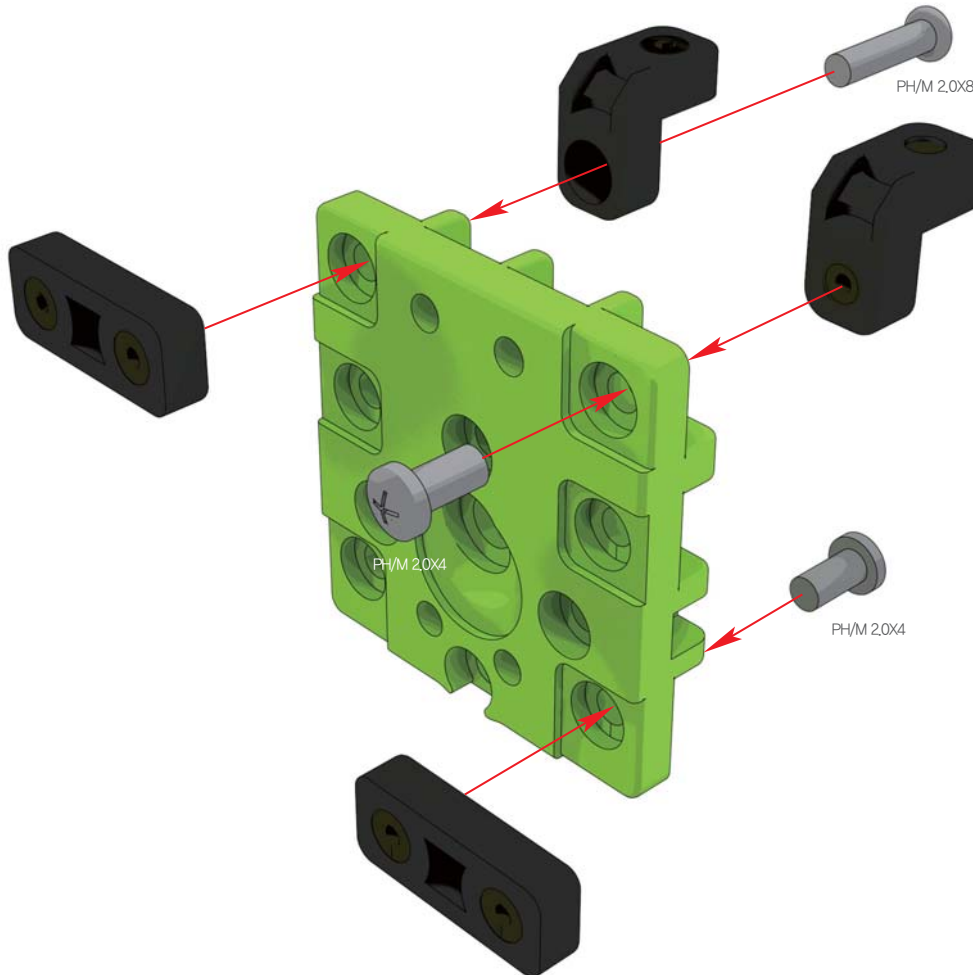
x4 DRA-0067
Horn Bolt
(BH/T 2.6x8)



x2 DRA-0002
Harness (75mm)



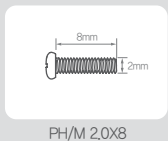
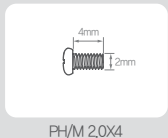
x6 DRA-0003
Harness (100mm)



사용부품



1:1 SCALE



사용부품



DRA-0054 2개
Bolt (PH/M 2.0x13)



DRA-0056 4개
Bolt (PH/M 2.0x4)



DRA-0058 2개
Bolt (PH/M 2.0x6)



DRJ-0006 6개
I-type Joint
(12.5mm, Double Nut)



DRB-0004 2개
Universal Plate

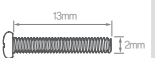
1:1 SCALE



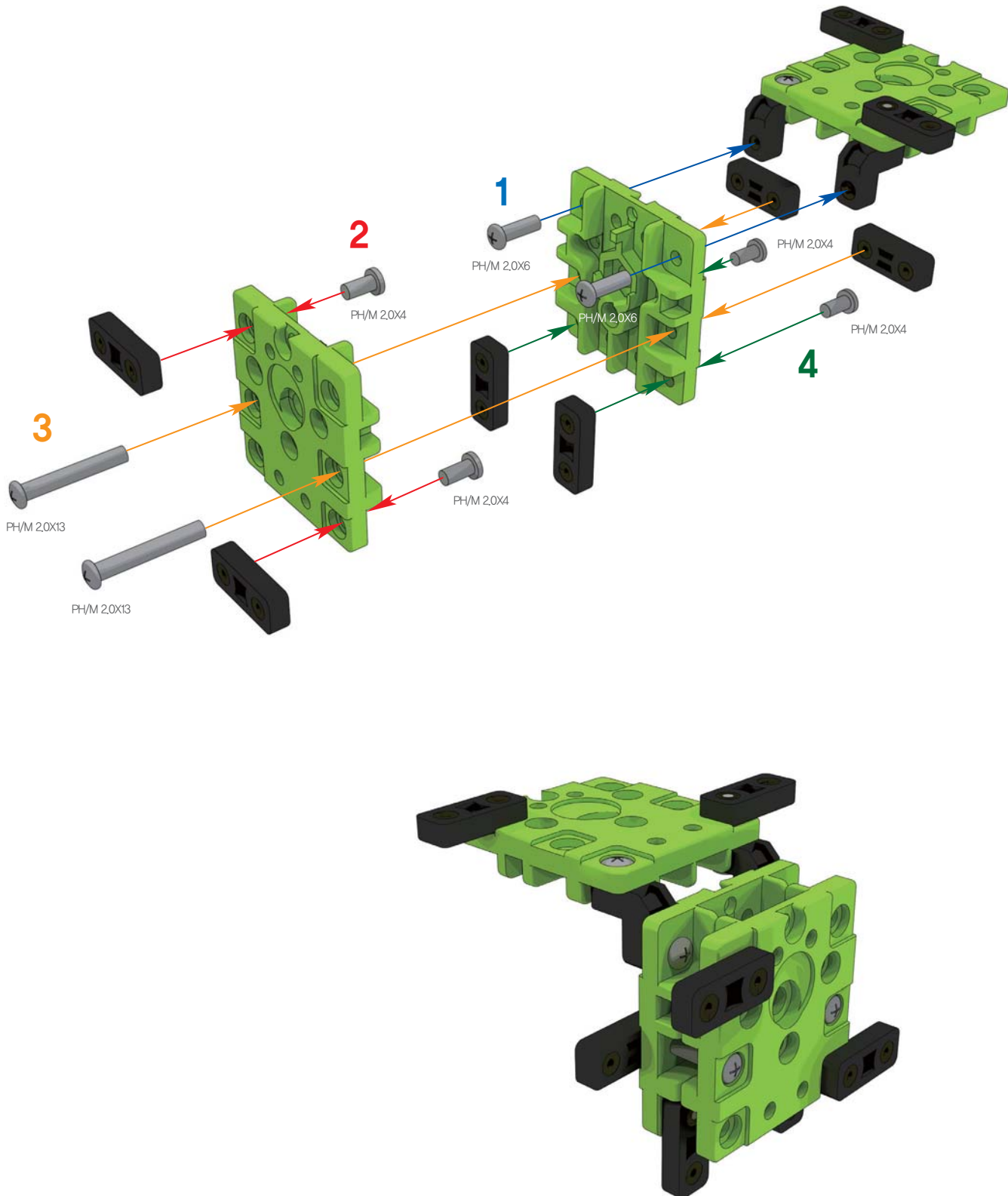
PH/M 2.0x4



PH/M 2.0x6



PH/M 2.0x13



※ 조립 순서에 주의하여 조립합니다.

사용부품



DRA-0051
Nut (M2)

27개



DRA-0054
Bolt (PH/M 2.0X13)

27개



DRA-0056
Bolt (PH/M 2.0X4)

27개



DRB-0004
Universal Plate

27개



DRB-0009
U2-type Bracket

17개

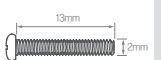
1:1 SCALE



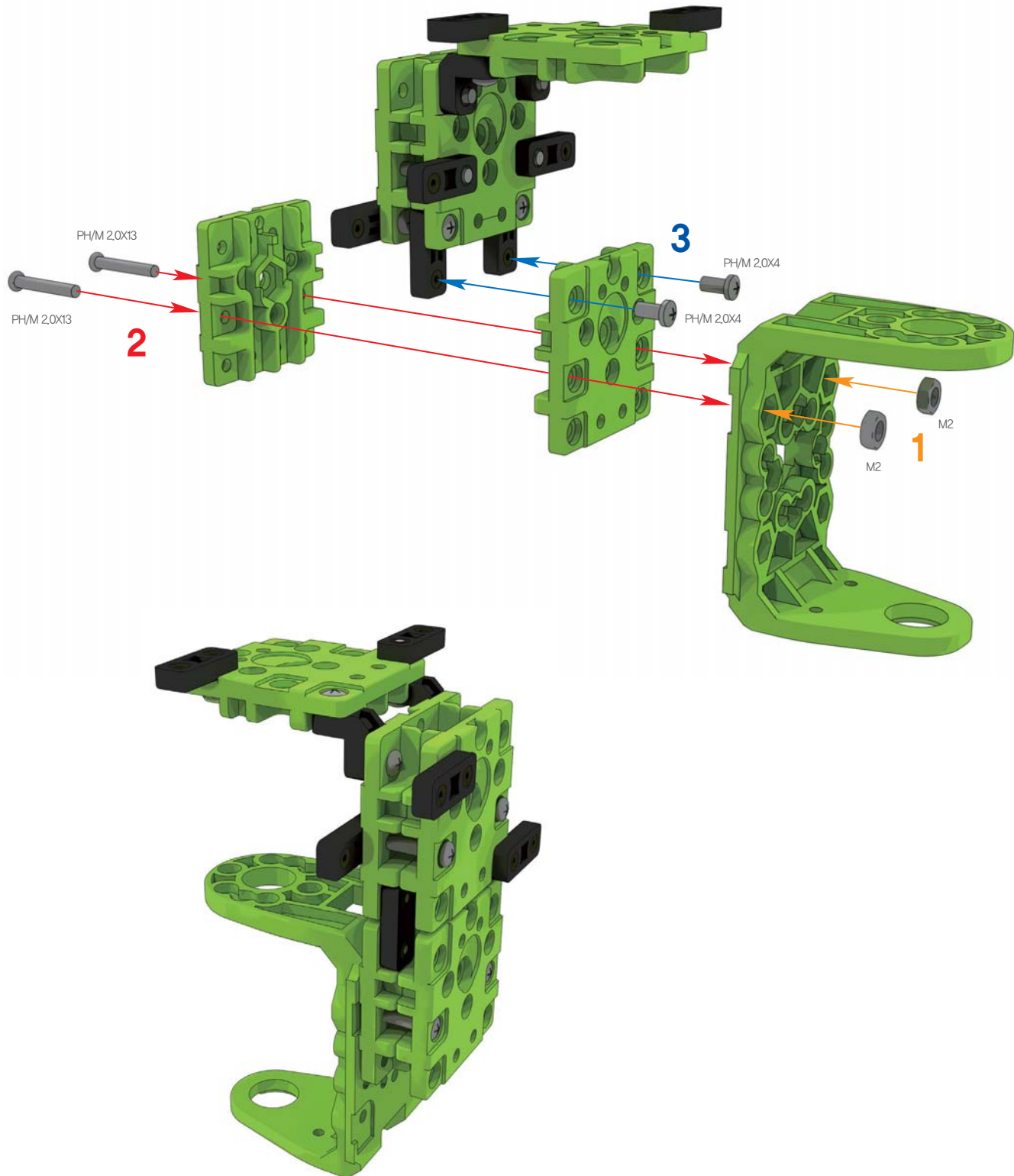
M2



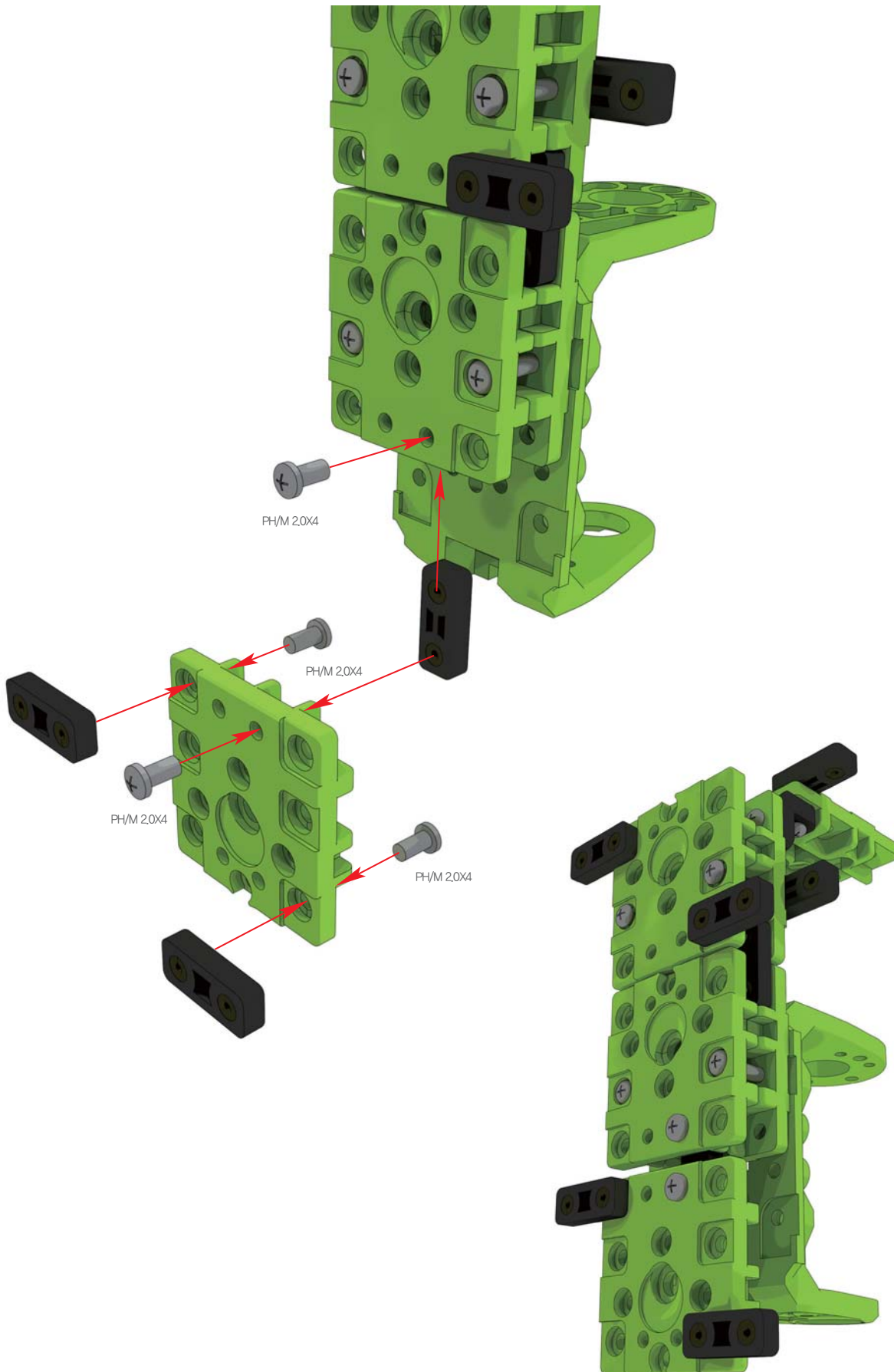
PH/M 2.0X4



PH/M 2.0X13



※ 조립 순서에 주의하여 조립합니다.



사용부품



DRA-0056 47개
Bolt (PH/M 2.0x4)

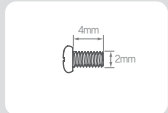


DRJ-0006 27개
I-type Joint
(12.5mm, Double Nut)



DRB-0004 17개
Universal Plate

1:1 SCALE



PH/M 2.0x4



사용부품



DRS-0101
HerkuleX Servo 1개

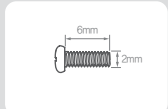


DRA-0058
Bolt (PH/M 2.0x6) 4개



DRJ-0001
L-type Joint
(Single Nut) 4개

1:1 SCALE



PH/M 2.0x6

※ 나머지 3세트도 동일한 방법으로 조립합니다. (총 4세트[ID 0번,1번,4번,5번] 조립)

사용부품



DRA-0056 8개
Bolt (PH/M 2.0x4)



DRA-0059 8개
Bolt (PH/M 2.0x8)



DRJ-0001 8개
L-type Joint
(Single Nut)



DRJ-0002 8개
L-type Joint
(Double Nut)

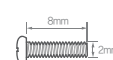


DRB-0004 4개
Universal Plate

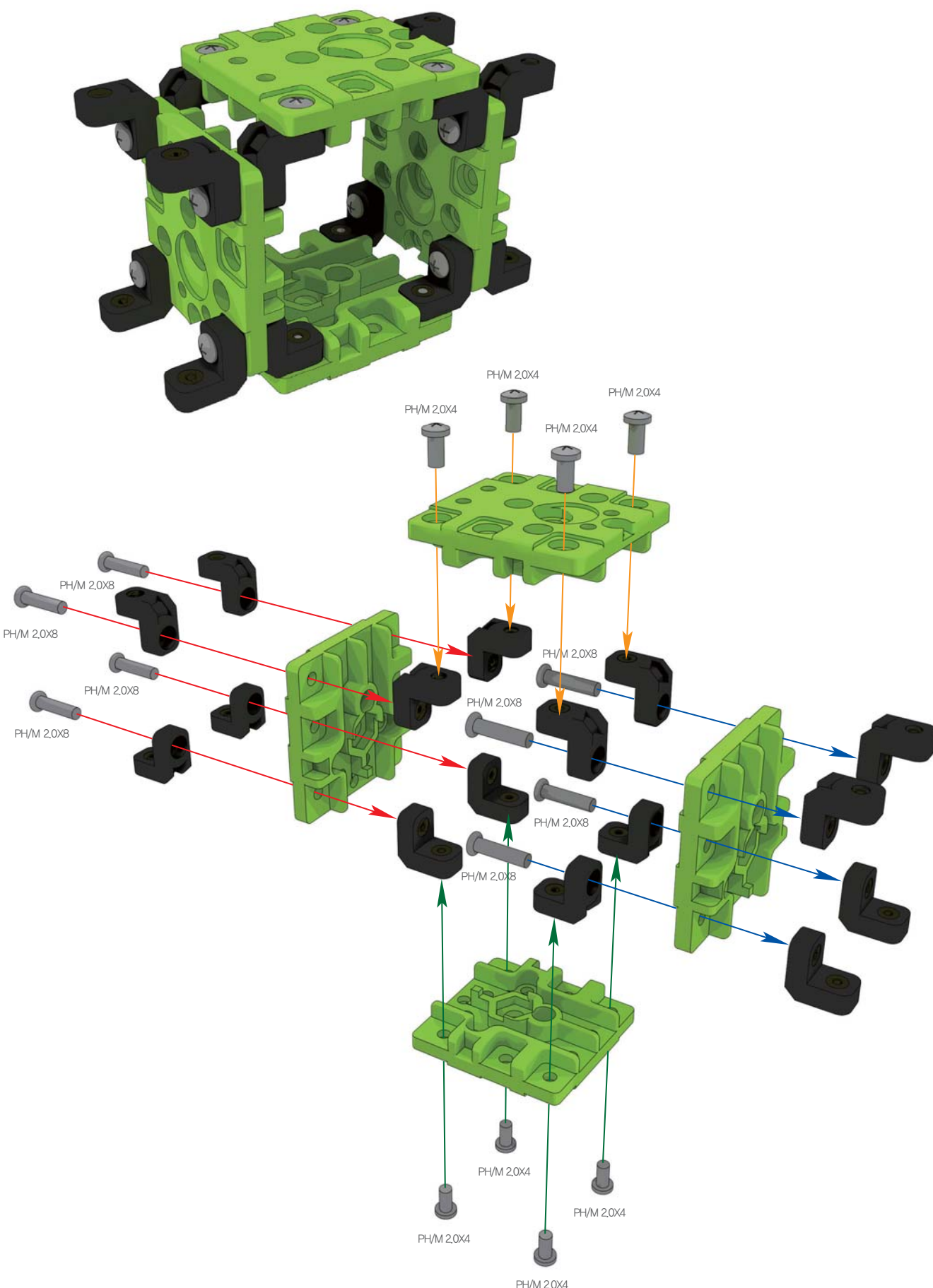
1:1 SCALE

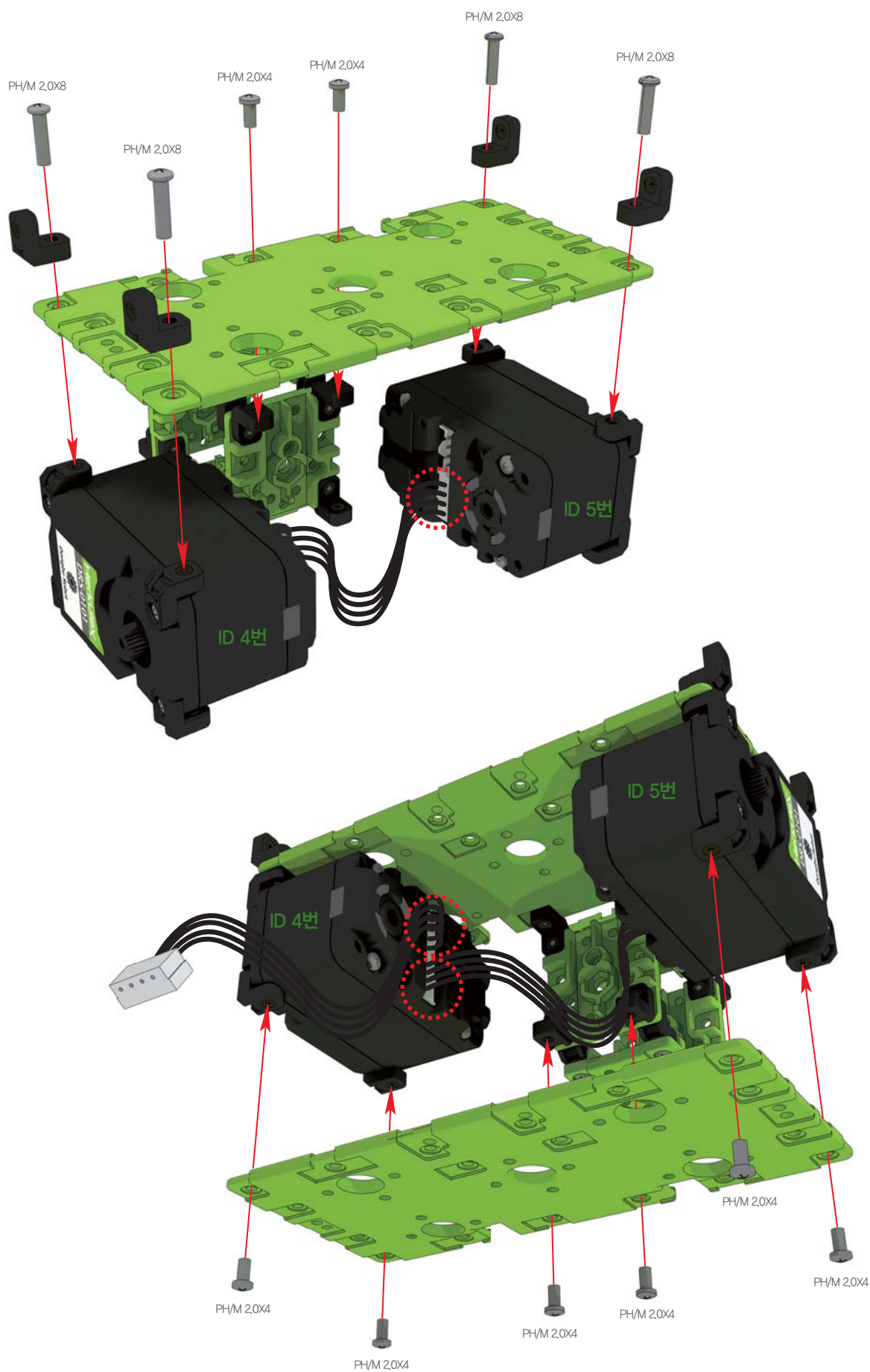


PH/M 2.0x4



PH/M 2.0x8





사용부품



DRA-0056
Bolt (PH/M 2.0X4)

87H



DRA-0059
Bolt (PH/M 2.0X8)

47H



DRJ-0001
L-type Joint
(Single Nut)

47H



DRB-0001
Front / Back

27H



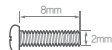
DRA-0003
Harness (100mm)

27H

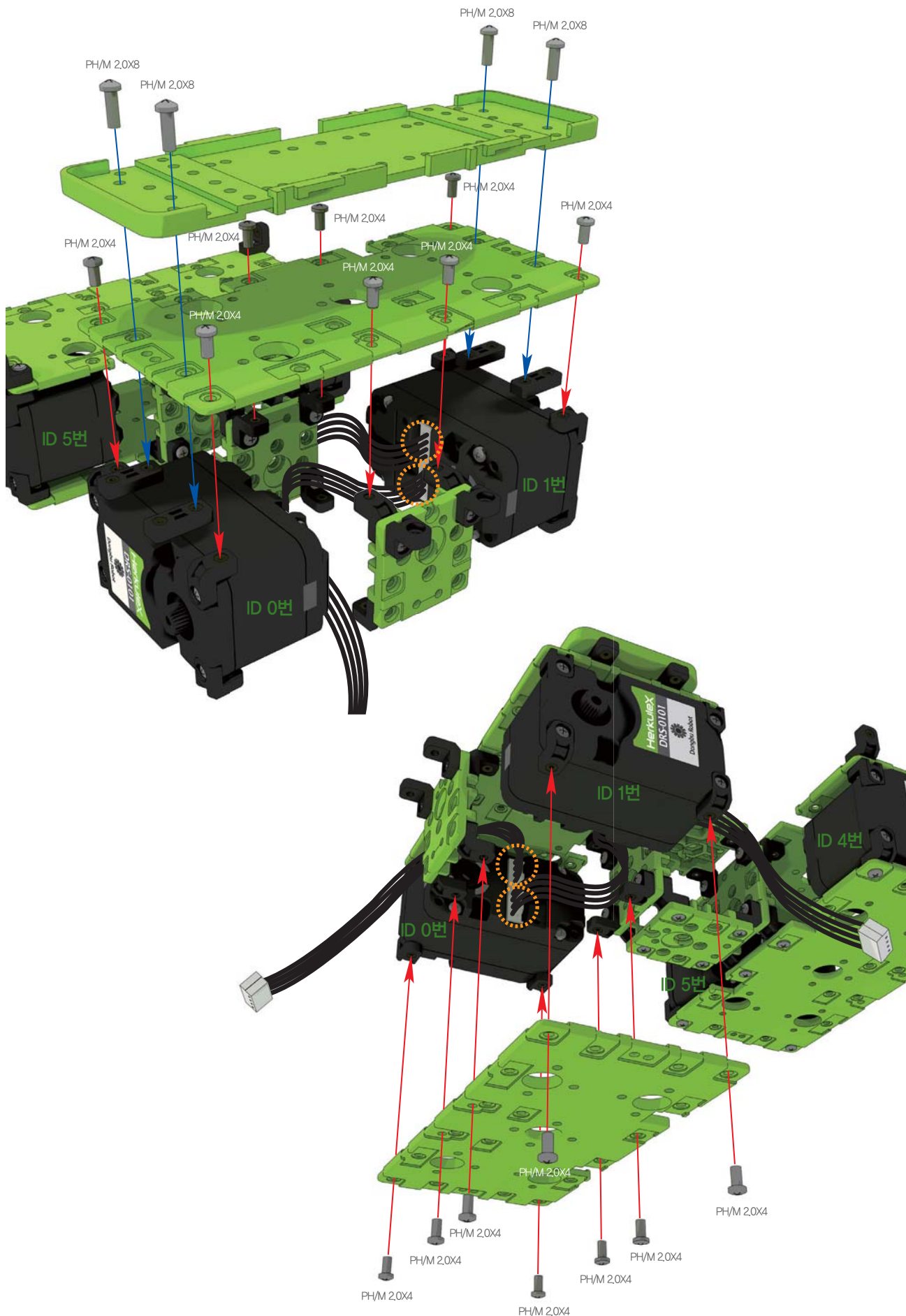
1:1 SCALE



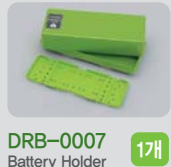
PH/M 2.0X4



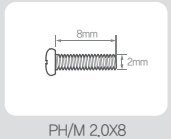
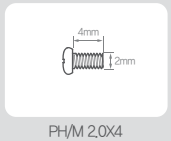
PH/M 2.0X8



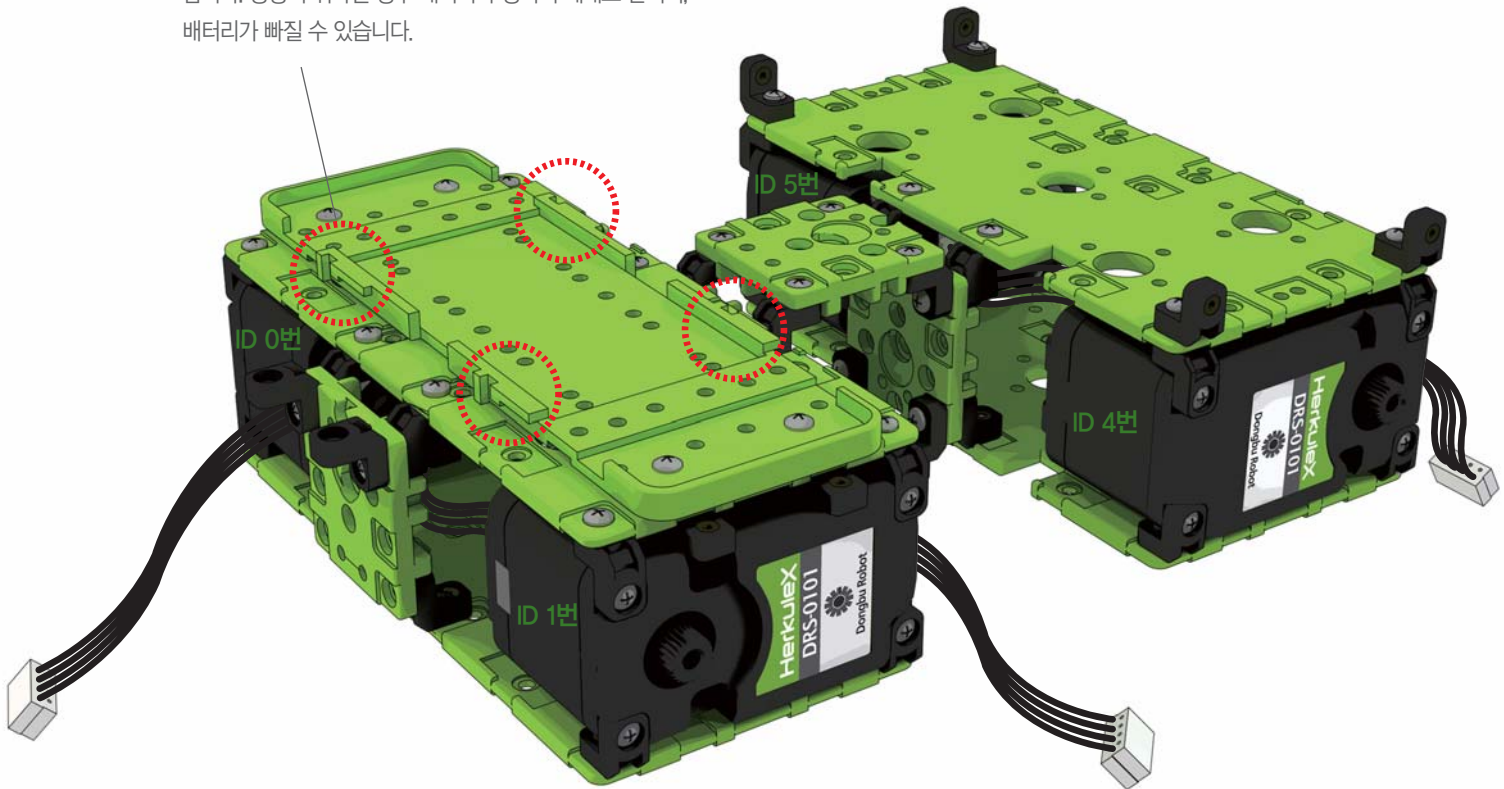
사용부품



1:1 SCALE



※ 배터리 홀더 설치 시 방향에 유의하여 주십시오. 그림에 표시된
부분의 형상을 잘 보고 조립을 해야만 적절한 배터리 장착이 가능
합니다. 방향이 뒤바뀔 경우 배터리가 장착이 제대로 안되어,
배터리가 빠질 수 있습니다.



사용부품



DRS-0101
HerkuleX Servo 1개



DRA-0059
Bolt (PH/M 2.0x8) 2개



DRA-0062
Bolt (PH/M 3.0x8) 1개

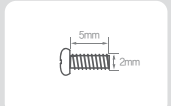


DRA-0064
Bolt (PH/T 2.0x5) 3개

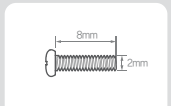


DRJ-0011
Bushing Set 1개

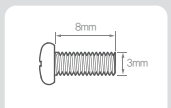
1:1 SCALE



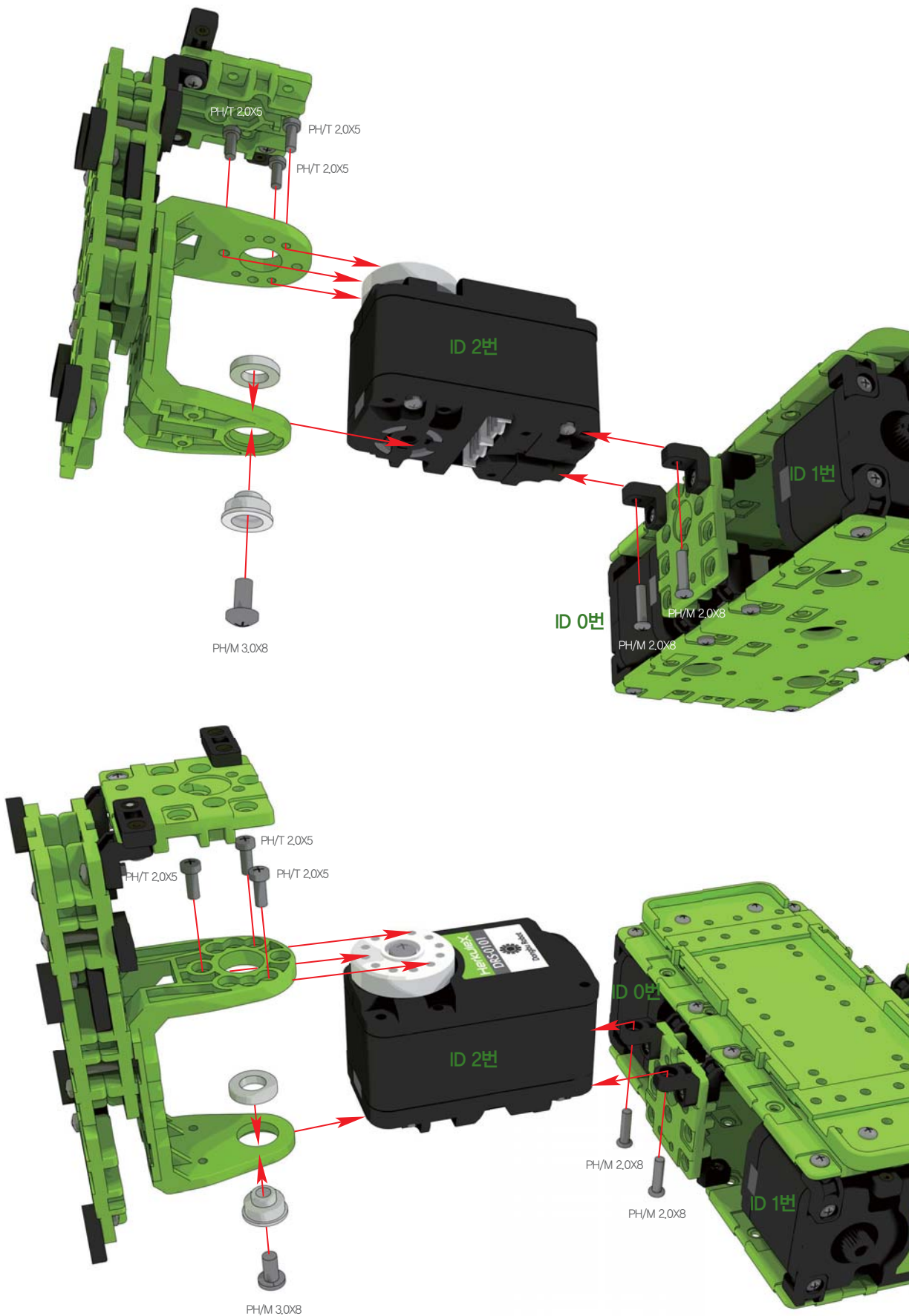
PH/T 2.0x5

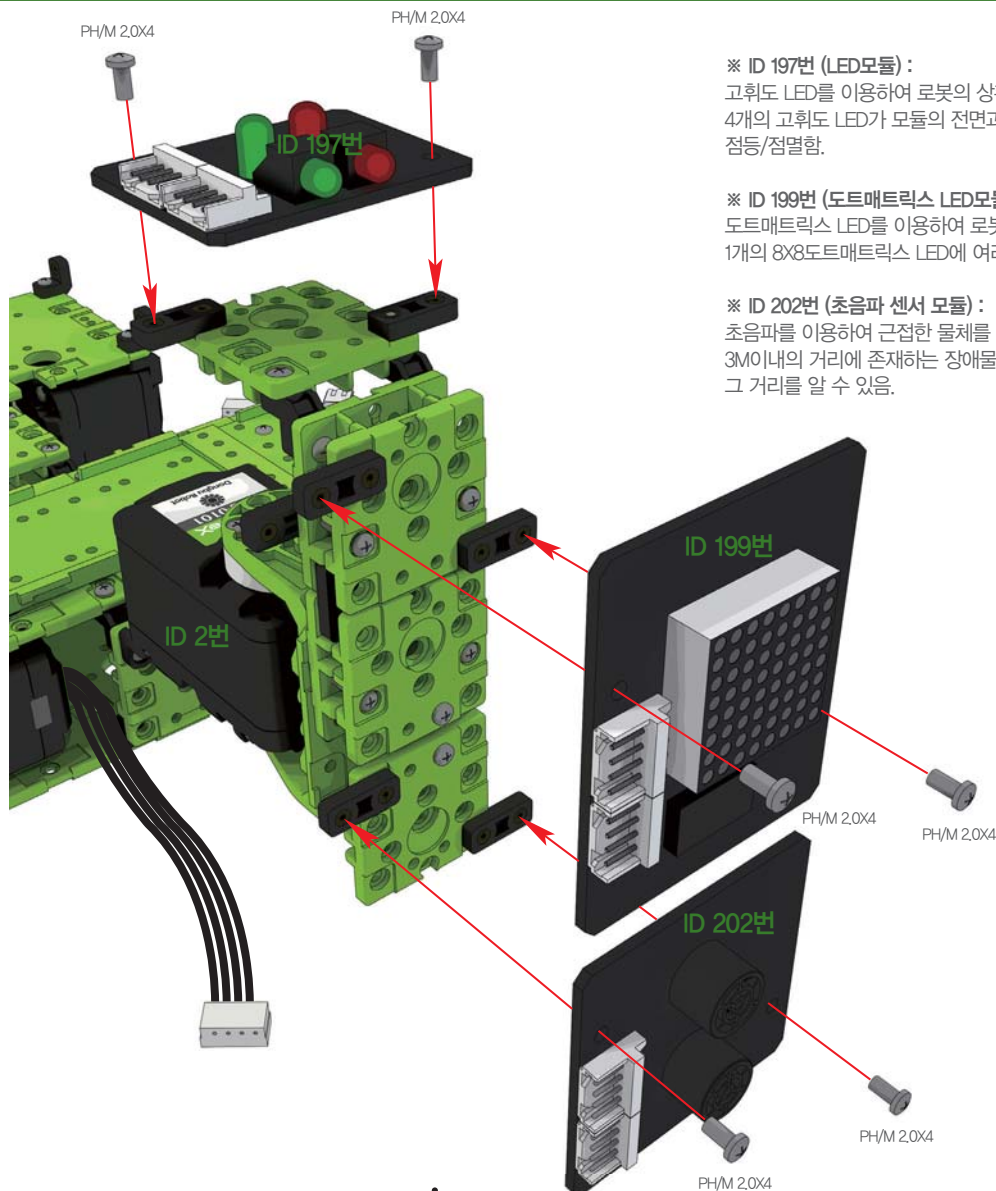


PH/M 2.0x8



PH/M 3.0x8





※ ID 197번 (LED모듈) :

고휘도 LED를 이용하여 로봇의 상황을 알려주는 액츄에이터.
4개의 고휘도 LED가 모듈의 전면과 측면에 위치하여 개별적으로
점등/점멸함.

※ ID 199번 (도트매트릭스 LED모듈) :

도트매트릭스 LED를 이용하여 로봇의 감정을 알려주는 액츄에이터.
1개의 8X8도트매트릭스 LED에 여러가지 그림과 문자, 숫자 등을 표현.

※ ID 202번 (초음파 센서 모듈) :

초음파를 이용하여 근접한 물체를 감지하는 센서.
3M이내의 거리에 존재하는 장애물(물체, 벽)들을 찾아 내고,
그 거리를 알 수 있음.

사용부품



DRA-0056 6개
Bolt (PH/M 2.0x4)

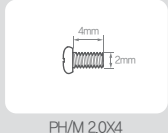


DRA-0002 2개
Harness (75mm)

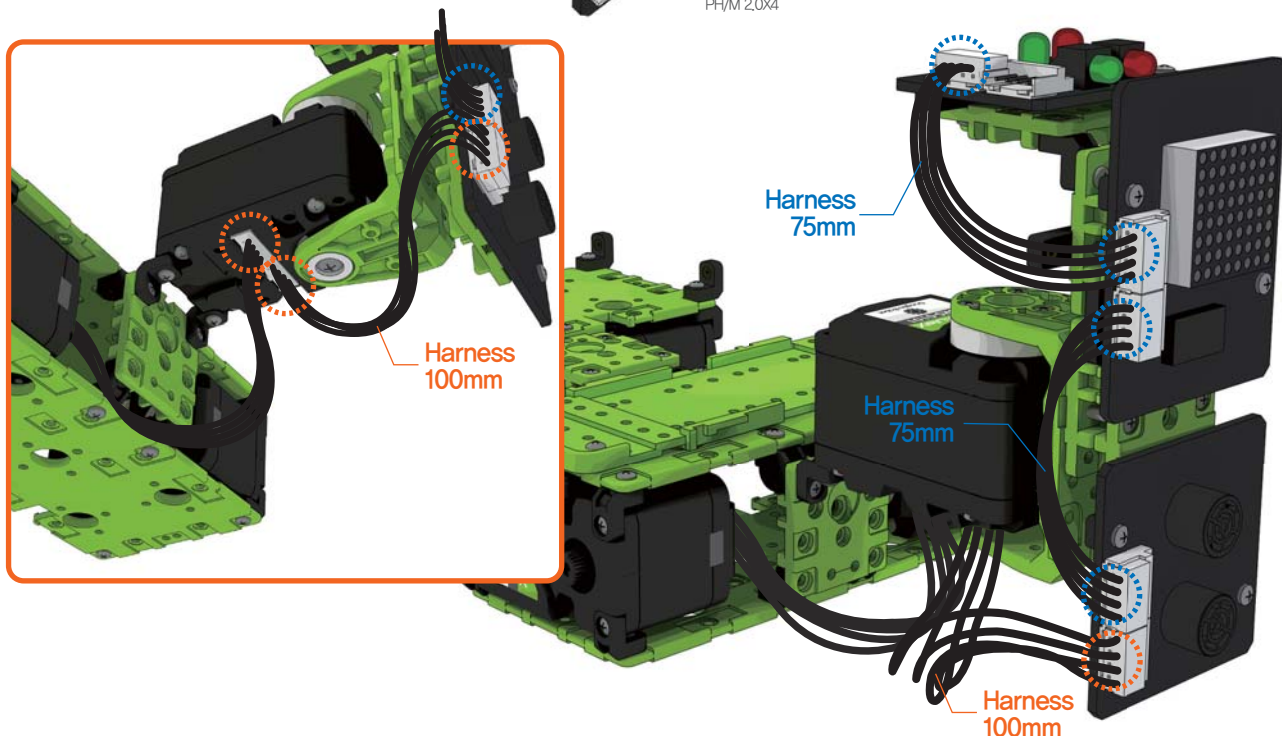


DRA-0003 1개
Harness (100mm)

1:1 SCALE



PH/M 2.0x4



사용부품



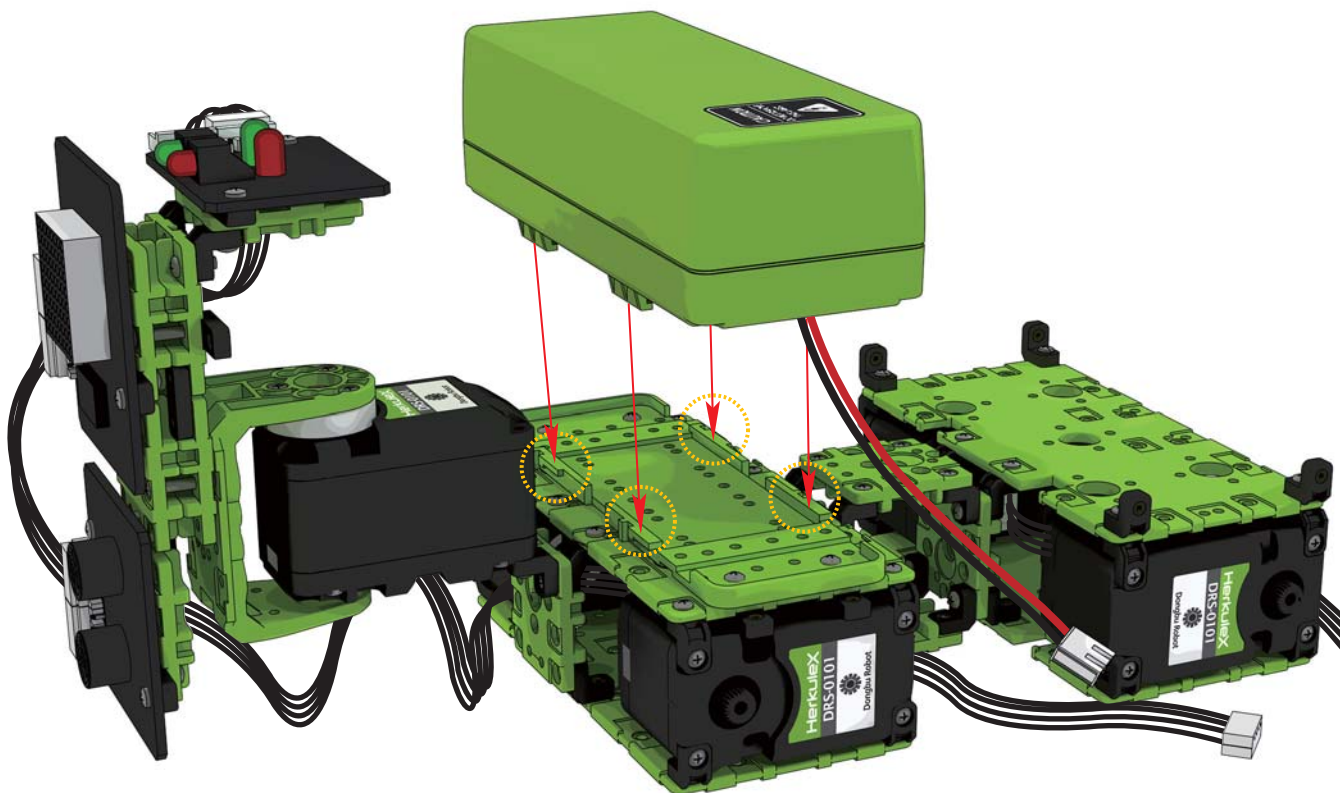
DRB-0007
Battery Case

1개



DRL-0728
7.4V Li-Po Battery
(3,000mAh)

1개



사용부품

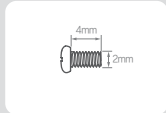


DRA-0056
Bolt (PH/M 2.0x4) **47개**

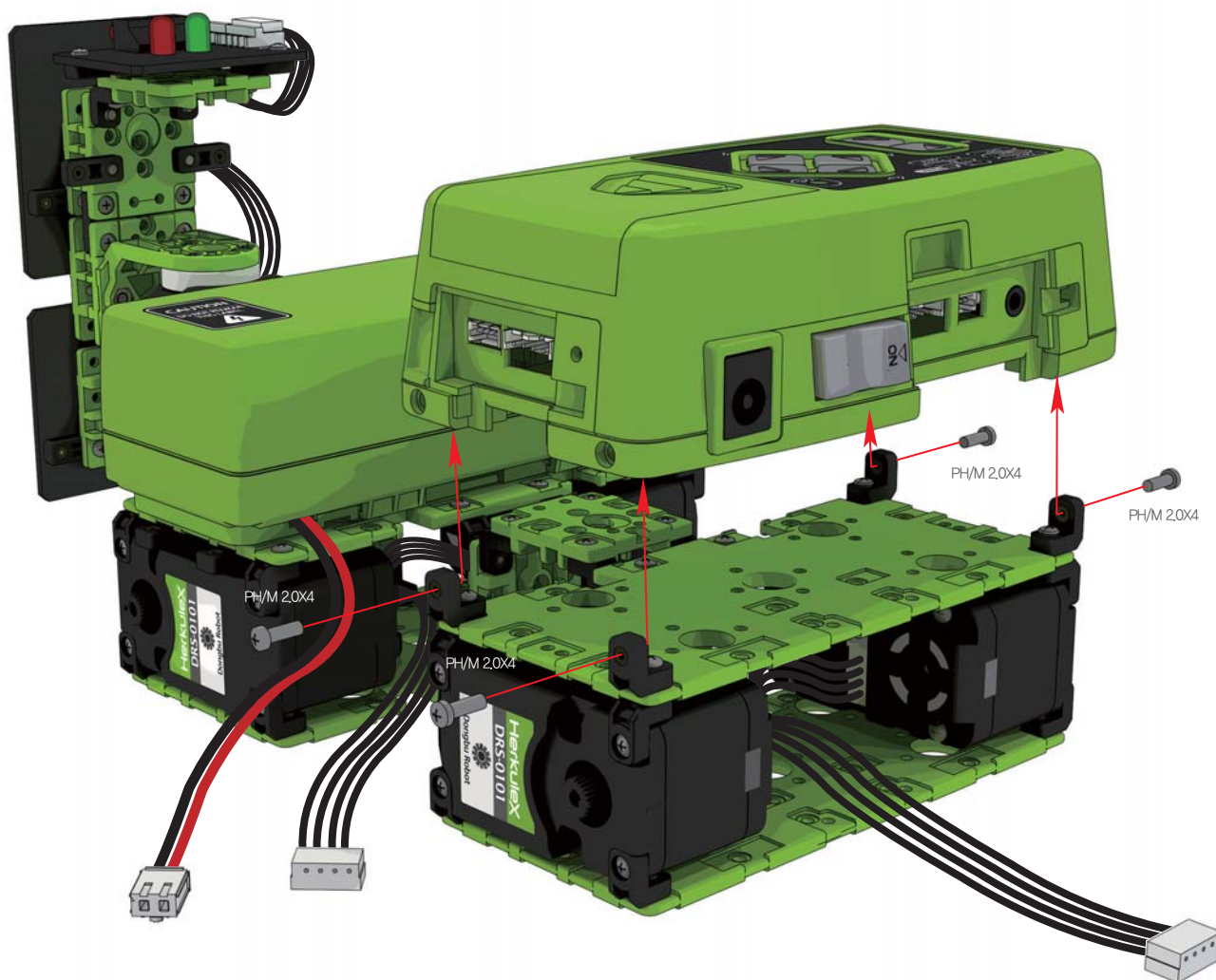


DRC-005T
Controller **1개**

1:1 SCALE



PH/M 2.0x4





사용부품

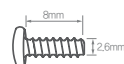


DRA-0067
Bolt (BH/T 2.6x8) **47개**

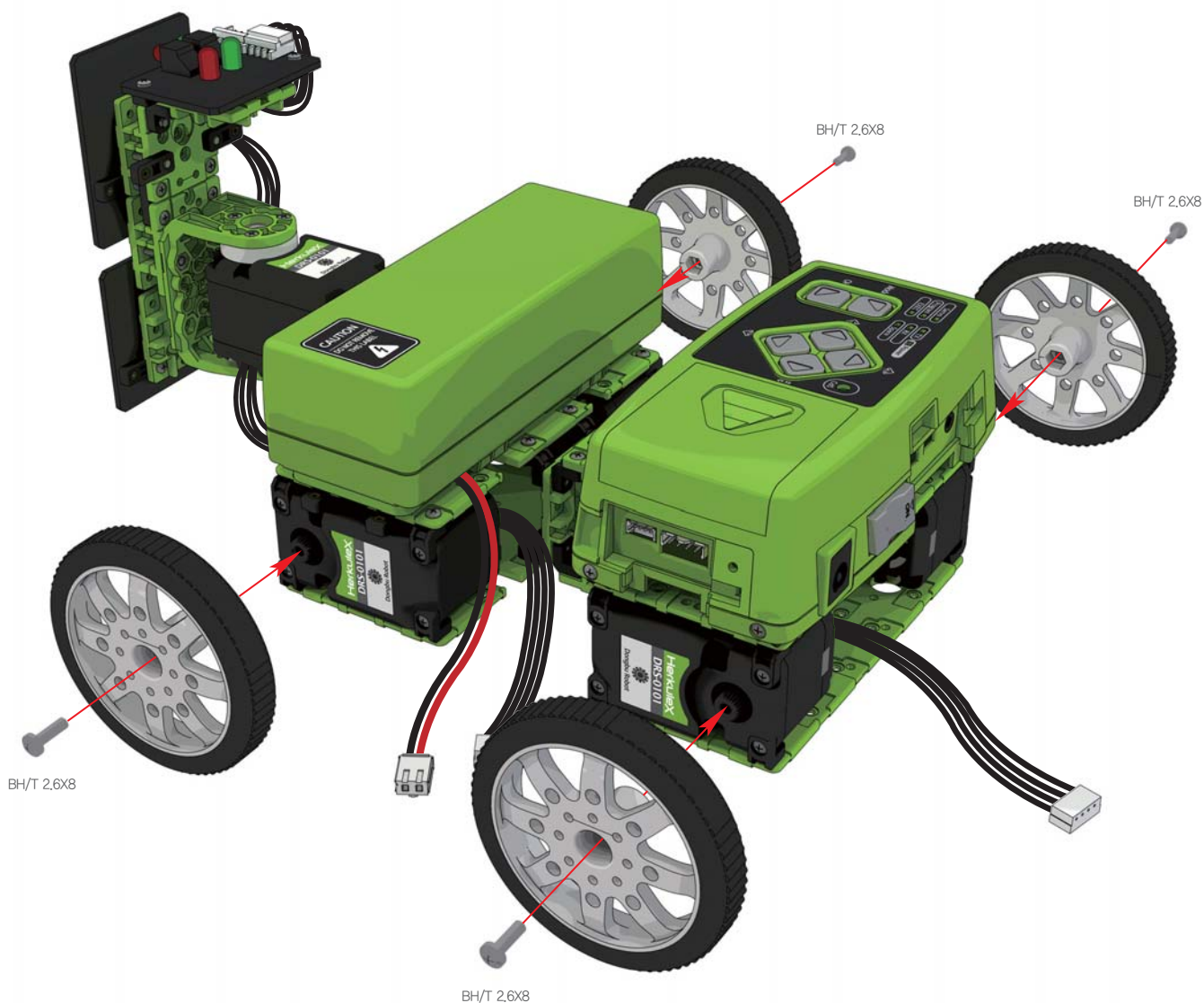


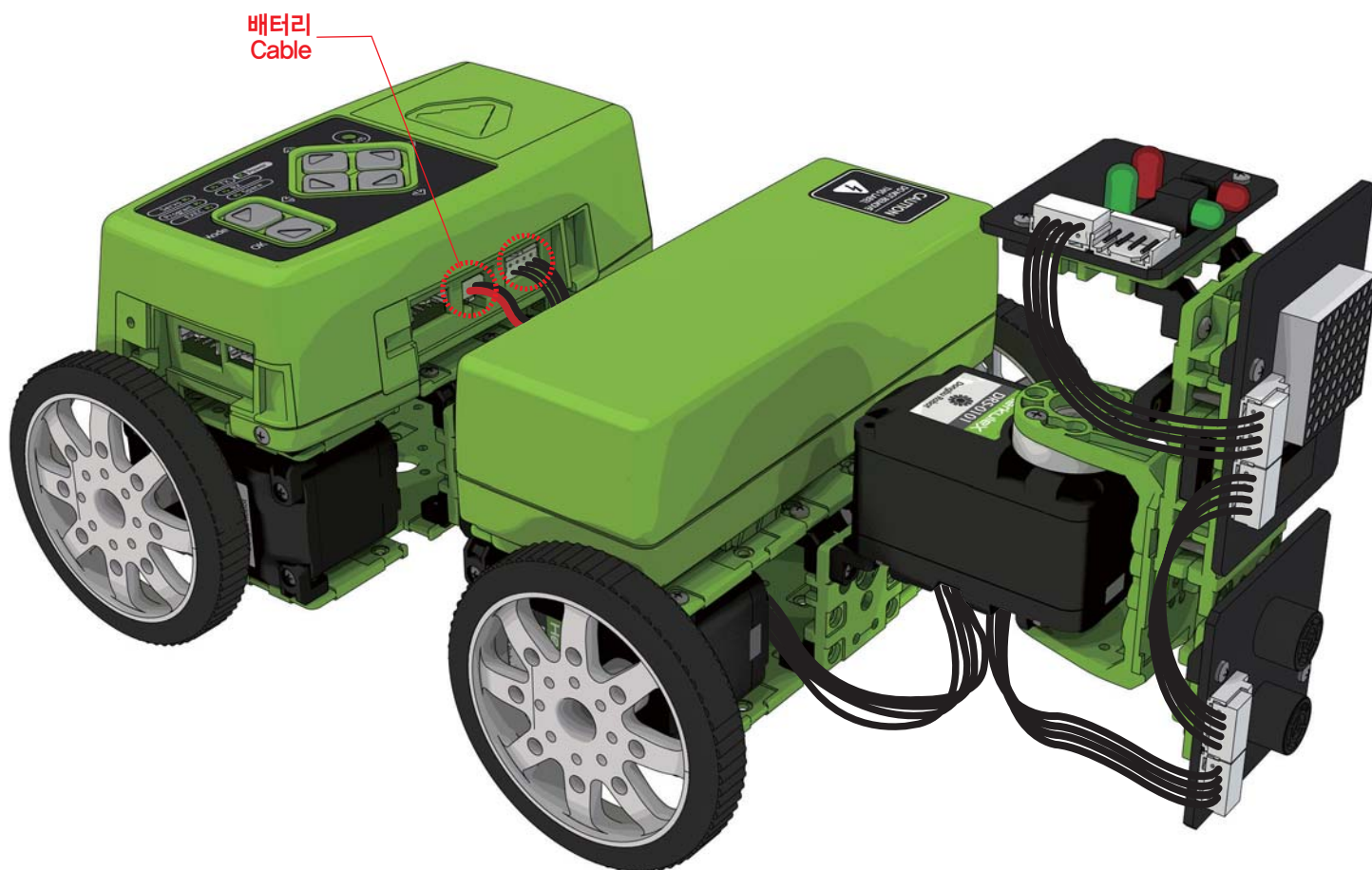
DCW-0001
Wheel (White, Ø60) **47개**

1:1 SCALE



BH/T 2.6x8





최종완성



최종완성